

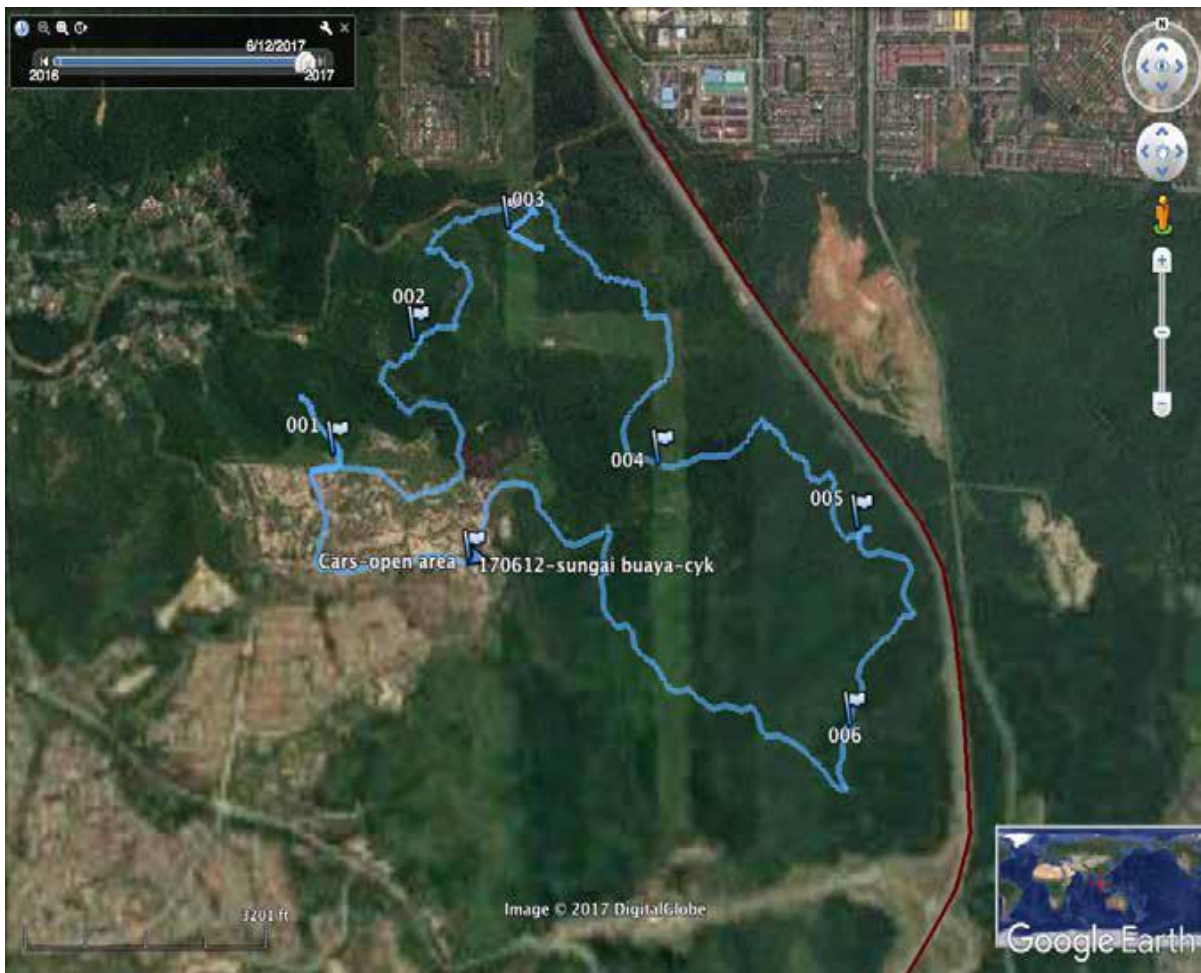
AS IT WAS ON RUN 3839

AT SUNGAI BUAYA

(12/6/2017)

HARE : CHOO YON KIT

GPS BY: ROB



12.1 km on the GPS but some checking at check 1 & 3 and 400m+ of climb.

A lot of overgrown wasteland. but lots of trails

Check 1 was where Bunnies and PH have gone before.

Check 2 was across the swamp.

Check 3 was after the filthy river we have crossed before on other runs and the check further on under the power lines and a perfectly good trail straight on but was back check down the hill again

Check 4 another under the power lines. paper very close so concerned may have been a false trail but the trail kept on going towards highway.

Check 5 simple back check near highway. Then passed track which came from under highway.

Check 6 Its was straightforward check, Hare might know that 6 pm front runners at the check 6 is dark. so its a easy check.